



# Is the World Ready for New Memories?

Jim Handy, Objective Analysis

Tom Coughlin, Coughlin Associates

# Why New Memories? Why Now?

- Embedded memories are already changing
  - Embedded NOR is unavailable in advanced process nodes
  - Embedded SRAM has stopped scaling

## Let's Have a Look at These

# Embedded NOR Replaced in Advanced Process Nodes

- Alternatives available today
  - MRAM, ReRAM
- Multiple foundries already shipping new memories
  - TSMC, Samsung, GLOBALFOUNDRIES, UMC...
- OEMs are starting to embrace these
  - Low power applications
  - High-end MCUs
    - AI is a big driver
  - Slow but steady transition

# New Memory Success Stories



**Fitness Monitors** (Sony, Garmin, Fitbit...)



**FMS Hearing Aids**  
the Future of Memory and Storage



**Smart Glasses**



**Data Center**



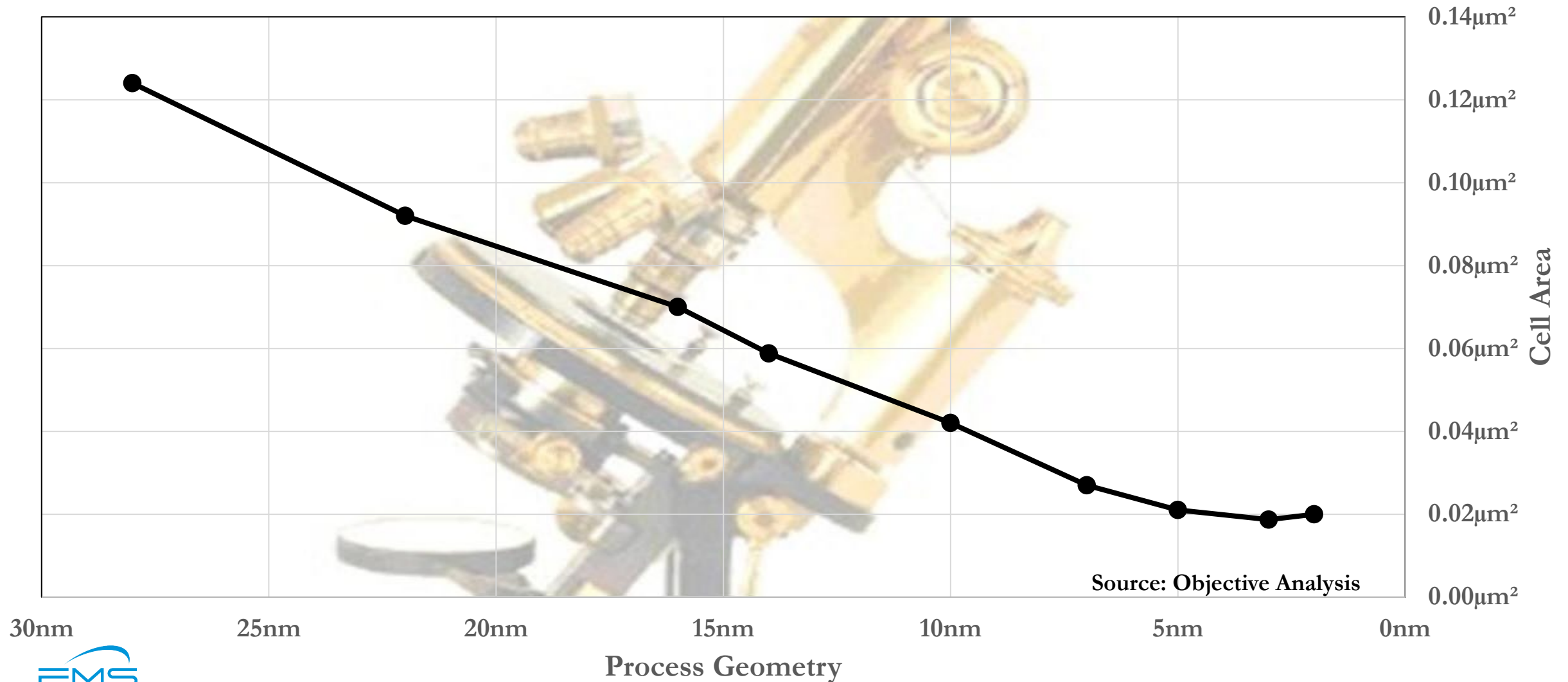
**Mil/Aero**

# Embedded Firmware in Advanced Nodes

- What can be done with MCU & ASIC code?
  - Move it outside the chip, using Serial (SPI) NOR
    - Requires on-chip SRAM caches for code currently being executed
    - The SRAM consumes significantly more area than 28nm NOR would
  - Use chiplet for NOR
    - More on this later
    - Currently an expensive solution
  - Use a non-NOR technology
    - MRAM, ReRAM are current favorites

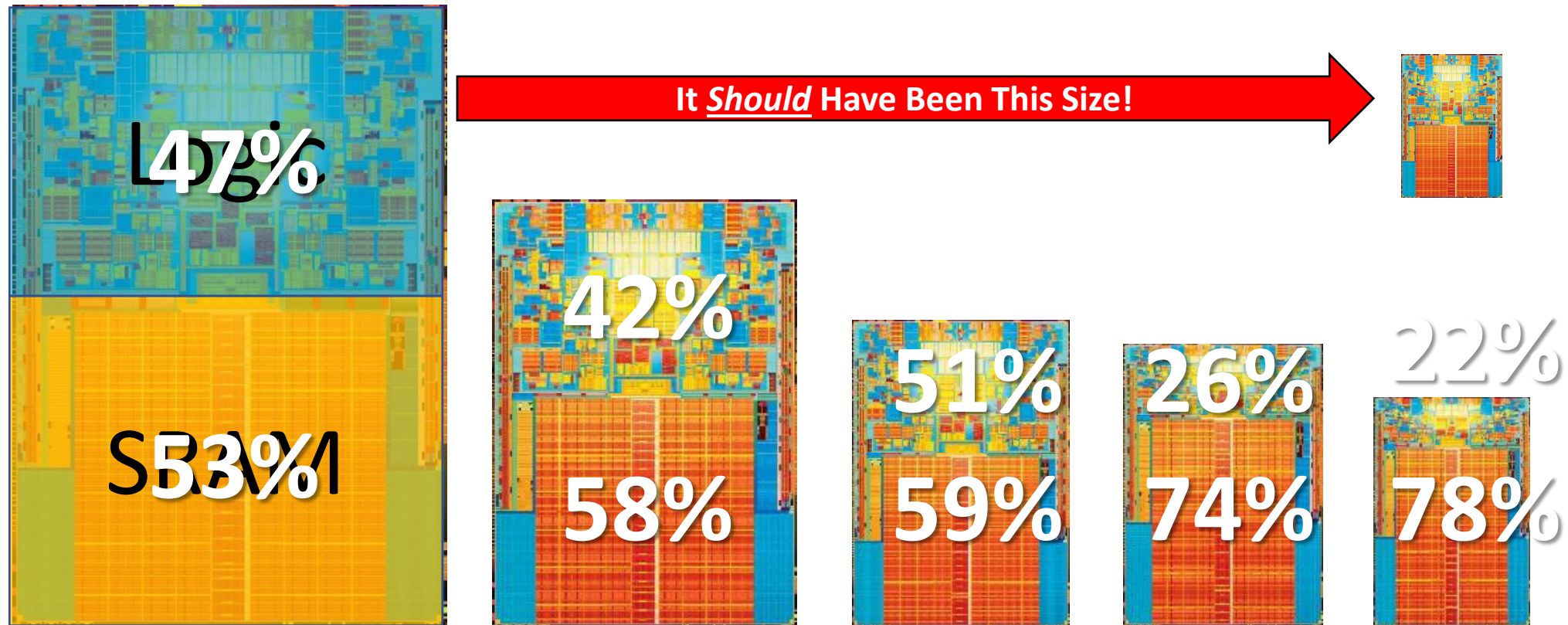
# SRAM No Longer Scales with Process

## SRAM Cell Area vs. Process





# Result: SRAM Caches Barely Shrink

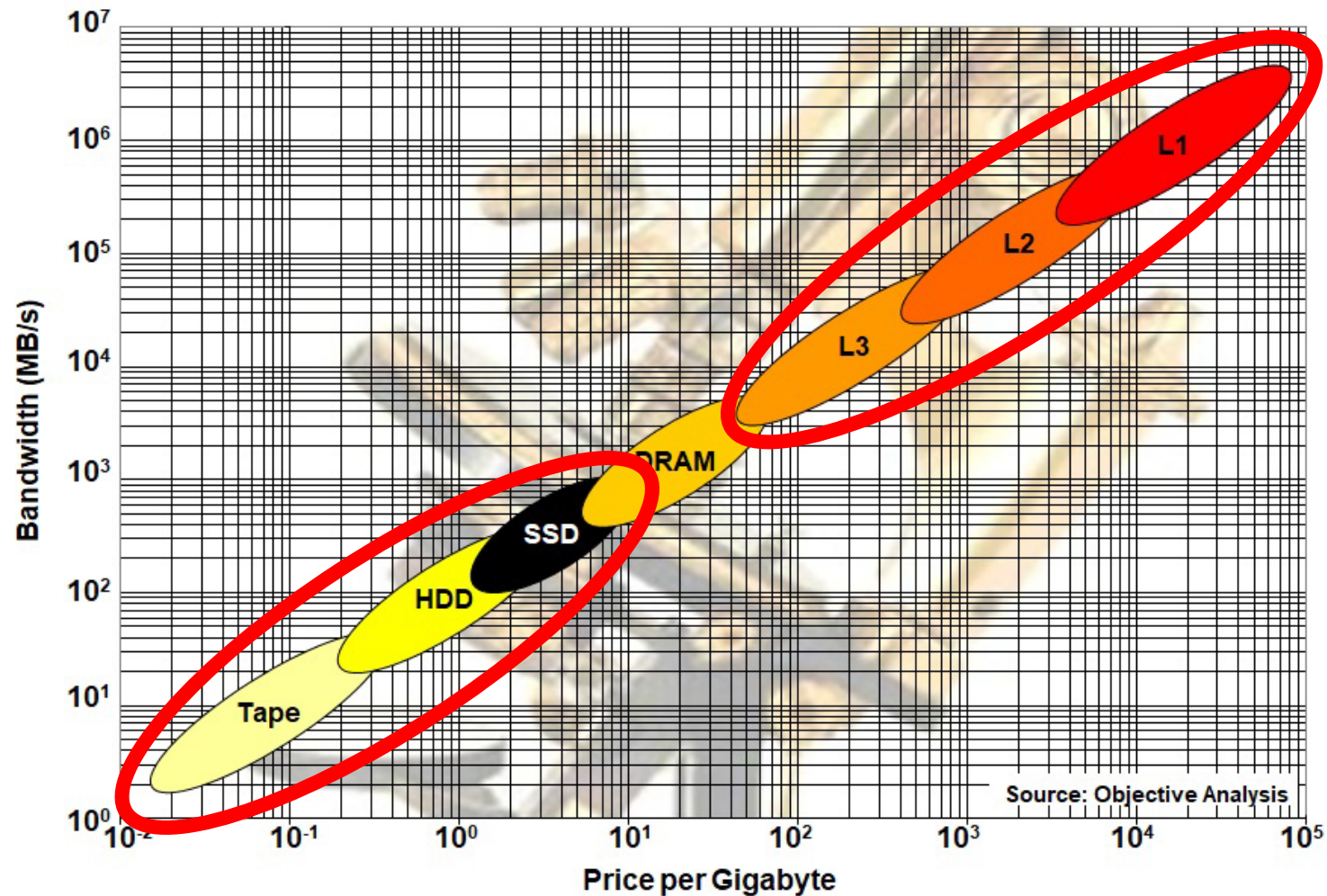


# Two Interesting Solutions

- Use a new memory technology for cache
  - Smaller cell than SRAM
  - Continues to scale with process
  - Slow and big can substitute for fast and small
- Put the slower caches onto chiplets
  - Cache chiplets on memory wafer
    - New memories are again a good option
  - Logic on foundry logic wafer
- Both of these solutions are nonvolatile/persistent
  - All new memory technologies scale
  - All new memory technologies are persistent



# Either Way, Nearly Everything Becomes Persistent



# Why New Memories? Why Now?

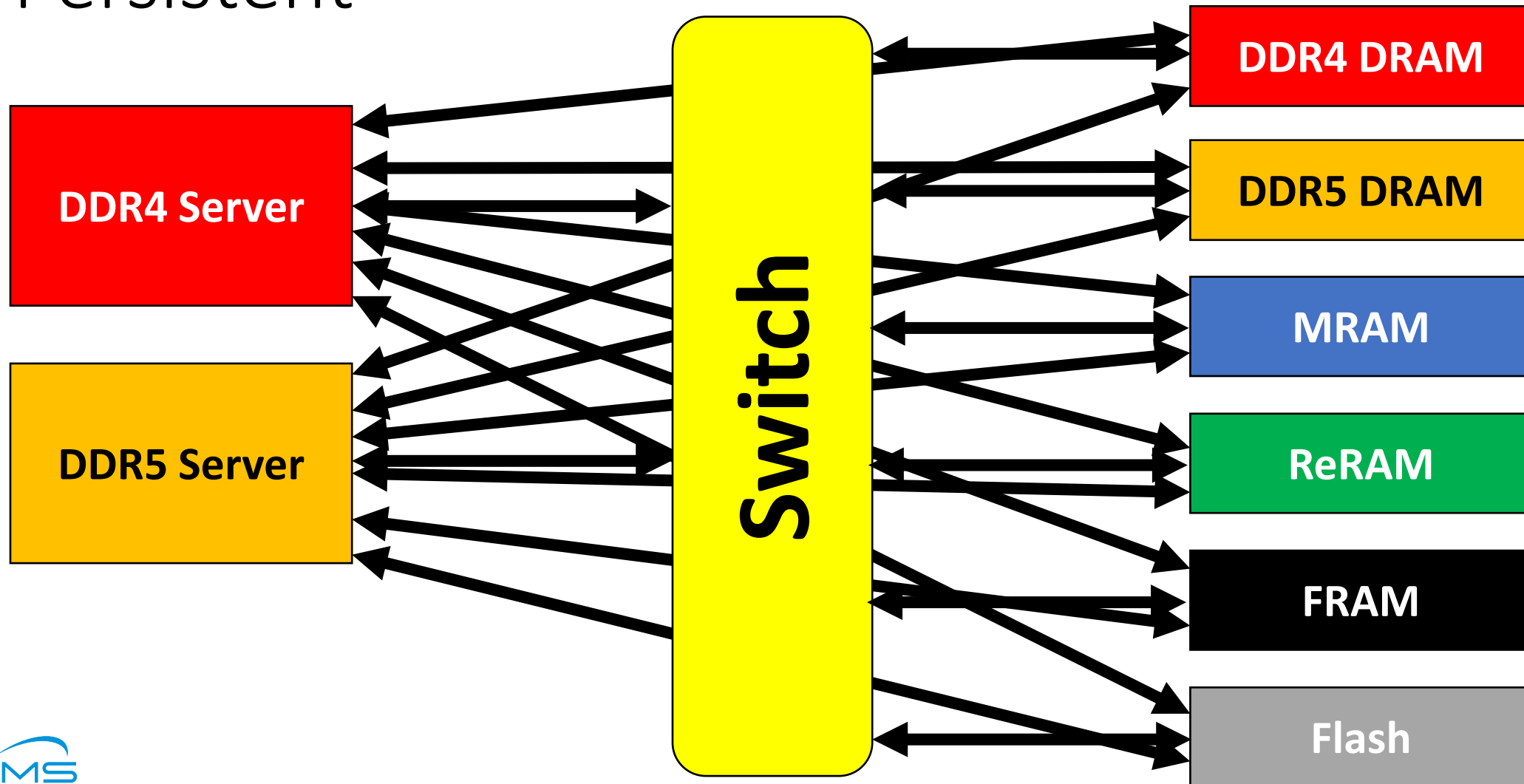
- Embedded memories are already changing
  - Embedded NOR doesn't work with FinFET
  - Embedded SRAM has stopped scaling
- DRAM scaling has slowed to a crawl
  - Old way: Each node was ~70% of prior node
  - New way: Past 6 nodes have been 10-20nm
    - 1Xnm, 1Ynm, 1Znm, 1Anm, 1Bnm, 1Ynm
- All leading memory makers have new memory research projects

Let's Have a Look at These

# Enablers Are Being Developed

- SNIA Nonvolatile Memory Programming Model
  - Limited application programs from Oracle & SAP
- CXL supports varying memory speeds
  - Processors can communicate with DRAM, MRAM, ReRAM, etc.
- UCIe is based on CXL

# CXL Supports Any Memory, Volatile or Persistent



# Report: CXL Looks for the Perfect Home

- Covers all perspectives
  - Where CXL is useful, and where it isn't
  - Demand drivers for CXL DRAM modules
  - Opportunities outside of DRAM
  - Forecast (Revenues, units, ASP)
- Available for immediate download:
  - [Objective-Analysis.com/reports](https://Objective-Analysis.com/reports)



# What's Been Standing in the Way?

- Economies of Scale determine viability
  - More expensive technologies get relegated to niches
  - Few applications can pay more for better performance



# Intel's Optane Proved The Point

- A small die size isn't enough
  - Manufacturing scale determines relative cost
  - Economies of scale prevail
- Optane's volumes were too low
  - Volume never justified the cost
  - >\$7B in Intel losses
    - Micron losses ~\$400M/quarter

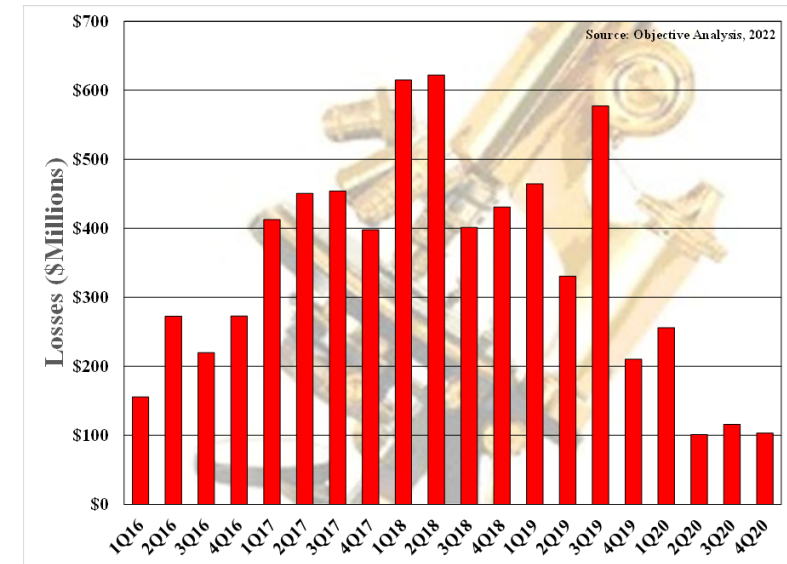
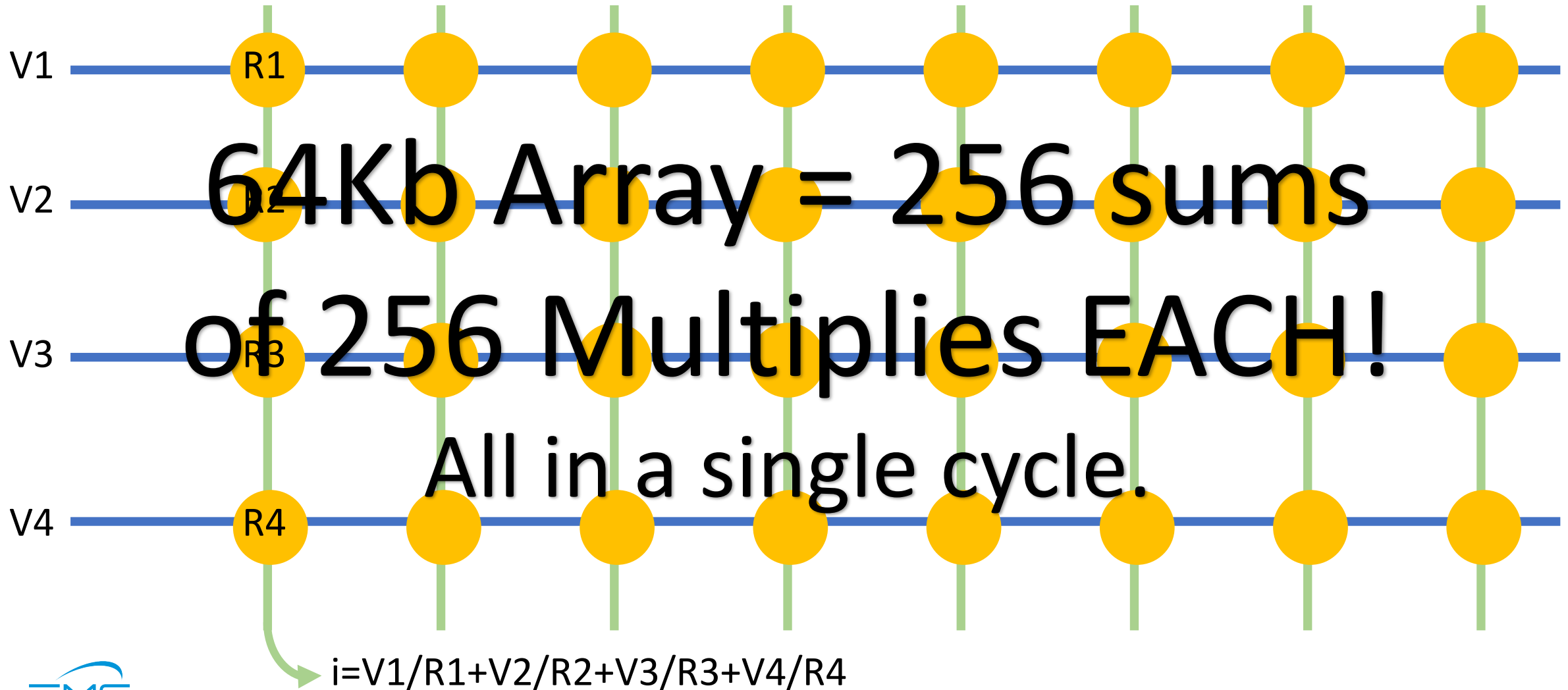


Chart Source: [Emerging Memories Branch Out](#)

# What About AI?

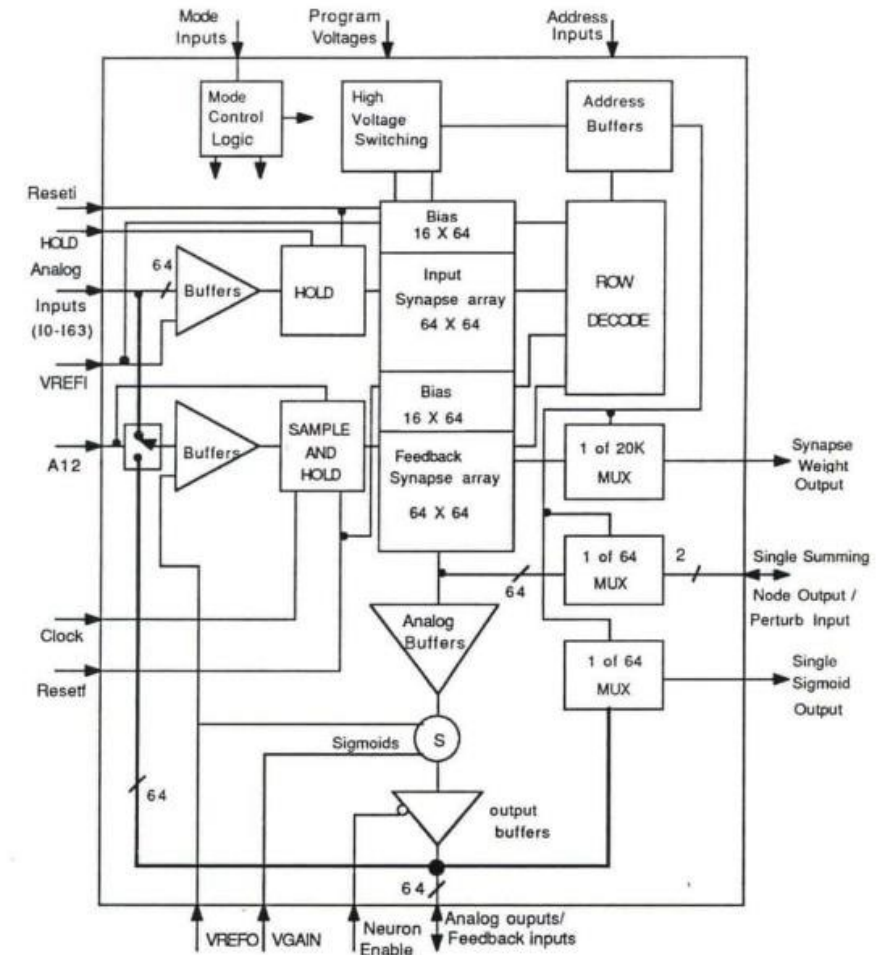
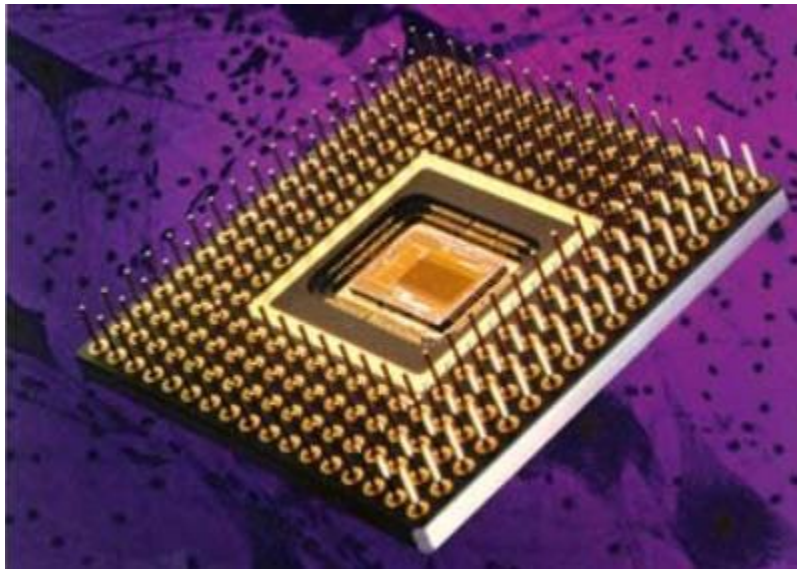
Neural Networks foredge Applications

# Neural Networks Fit New Memory Technologies



# Neural Networks Are Anything But New!

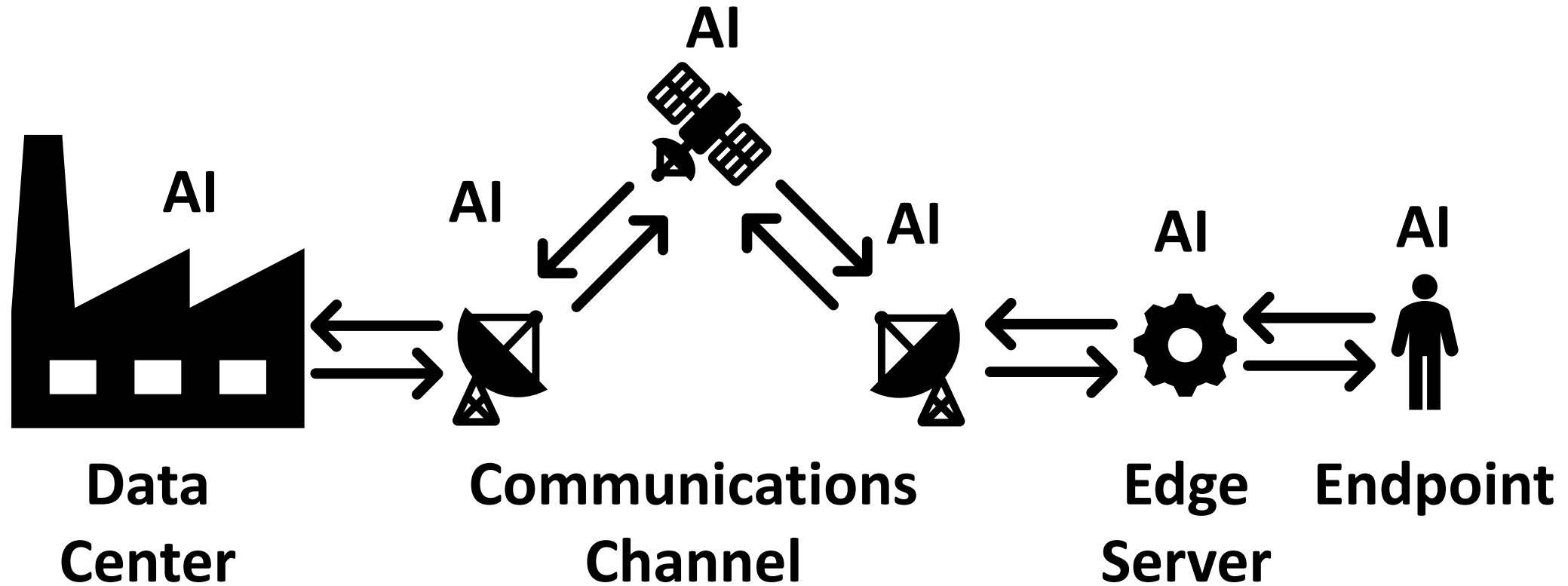
- Intel's 80170NX ETANN
  - Electrically-Trainable Analog Neural Network
- Introduced in 1989
- Not a commercial success



# Will Neural Networks Help?

- Neural nets are great for endpoint applications
  - Low energy consumption
  - “Fast enough” performance
  - Low die complexity ► low cost
- There are drawbacks
  - No clear leadership or standards
  - Limited functionality
  - Very little software support

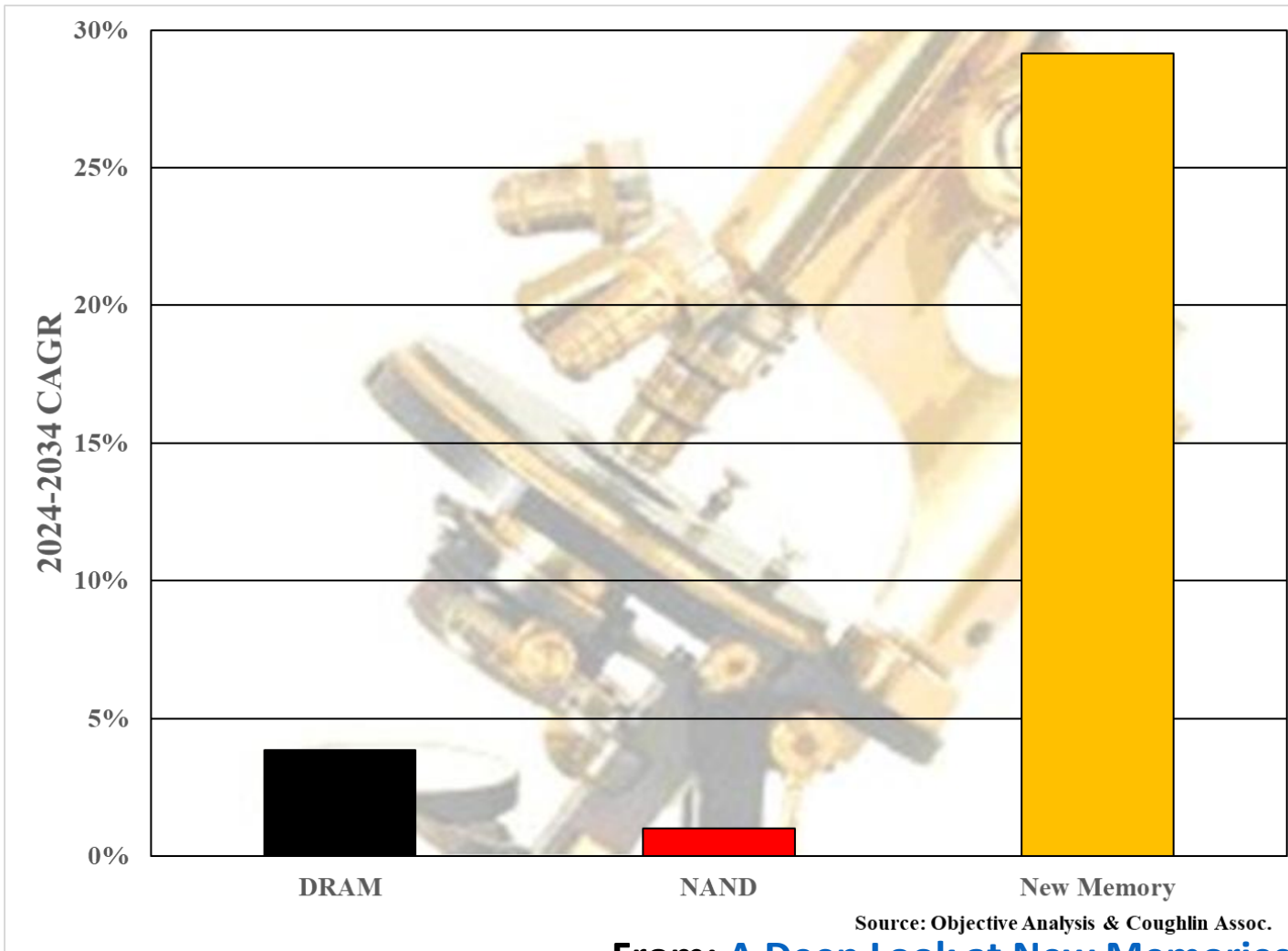
# Neural Nets May Bring AI to the Endpoint



**AI eases bandwidth requirements**



# New Memories Growing Fast



New memory revenue growth much higher than DRAM or NAND flash

From: [A Deep Look at New Memories](#)

# Report: A Deep Look at New Memories



*Coughlin  
Associates*

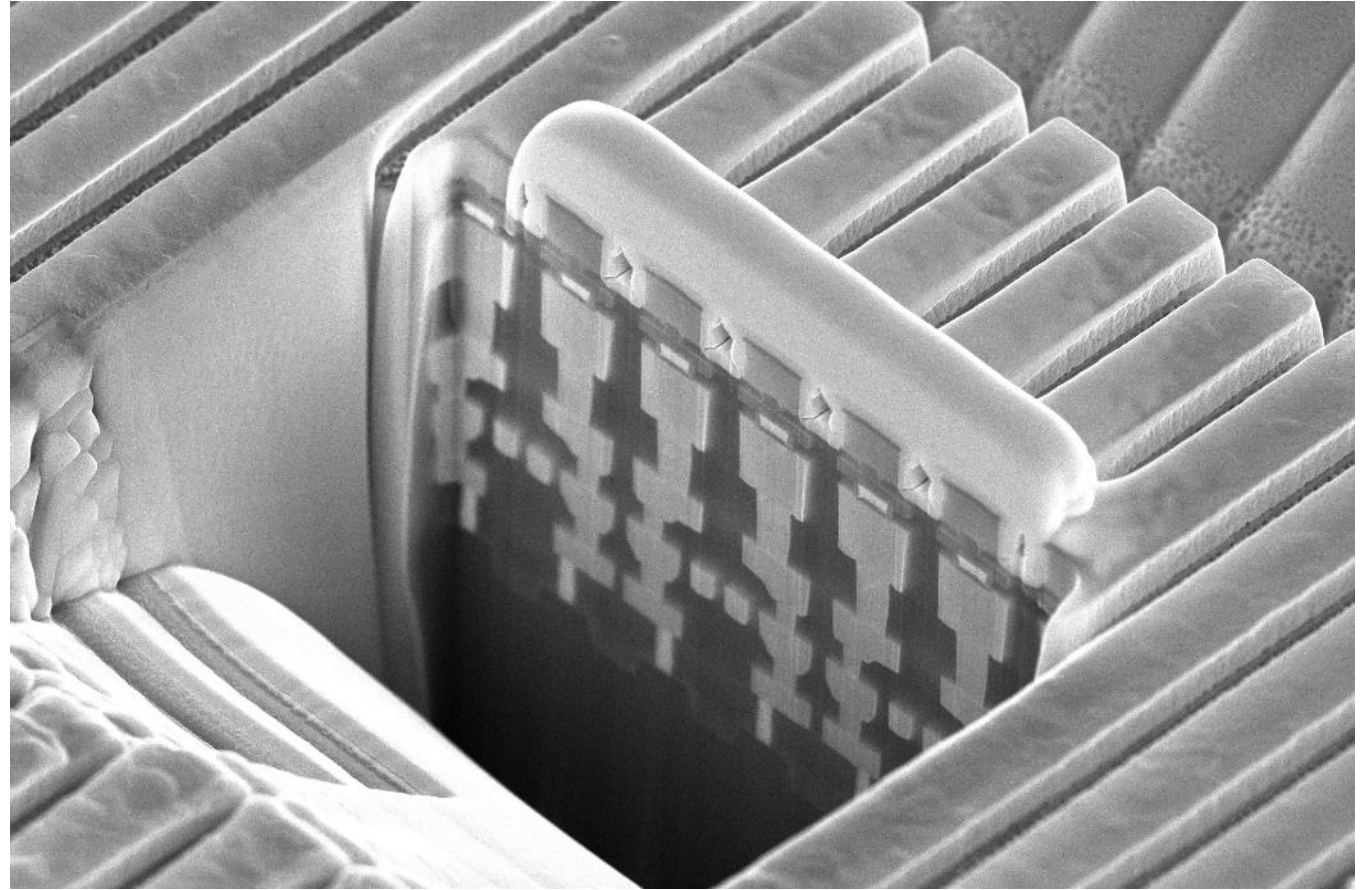


Photo courtesy of CEA Leti, 2023

**Now Available!**

<https://Objective-Analysis.com/reports/#Emerging>  
<http://www.TomCoughlin.com/techpapers.htm>