



Flash Memory Summit

Opportunity for QLC NVMe SSDs

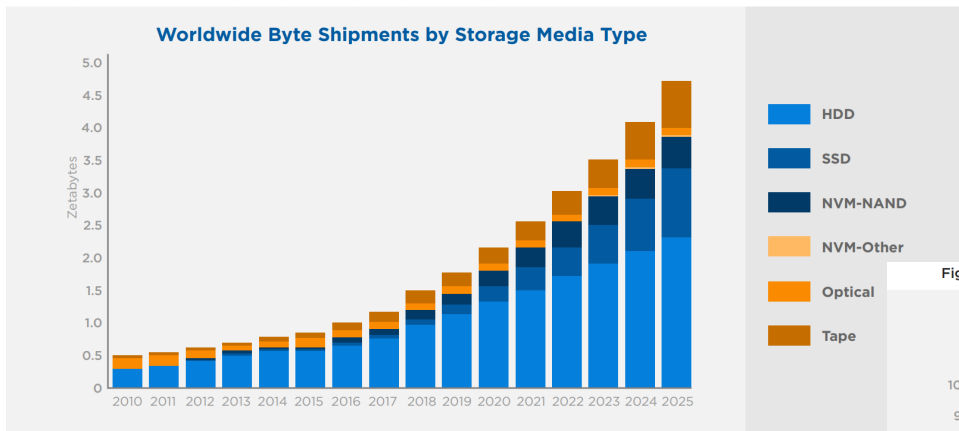
Reducing data center TCO

Jonmichael Hands, Sr. Strategic
Planner and Product Manager,
Intel Non-Volatile Memory Solutions Group



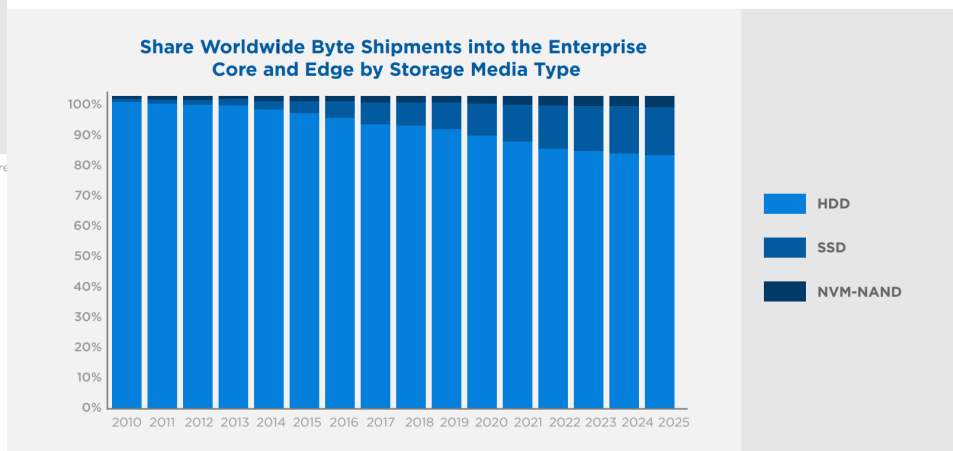
Opportunity for QLC NVMe SSDs

Figure 10 - Worldwide Byte Shipments by Storage Media Type



Source: Data Age 2025, sponsored by Seagate with data from IDC Global DataSphere

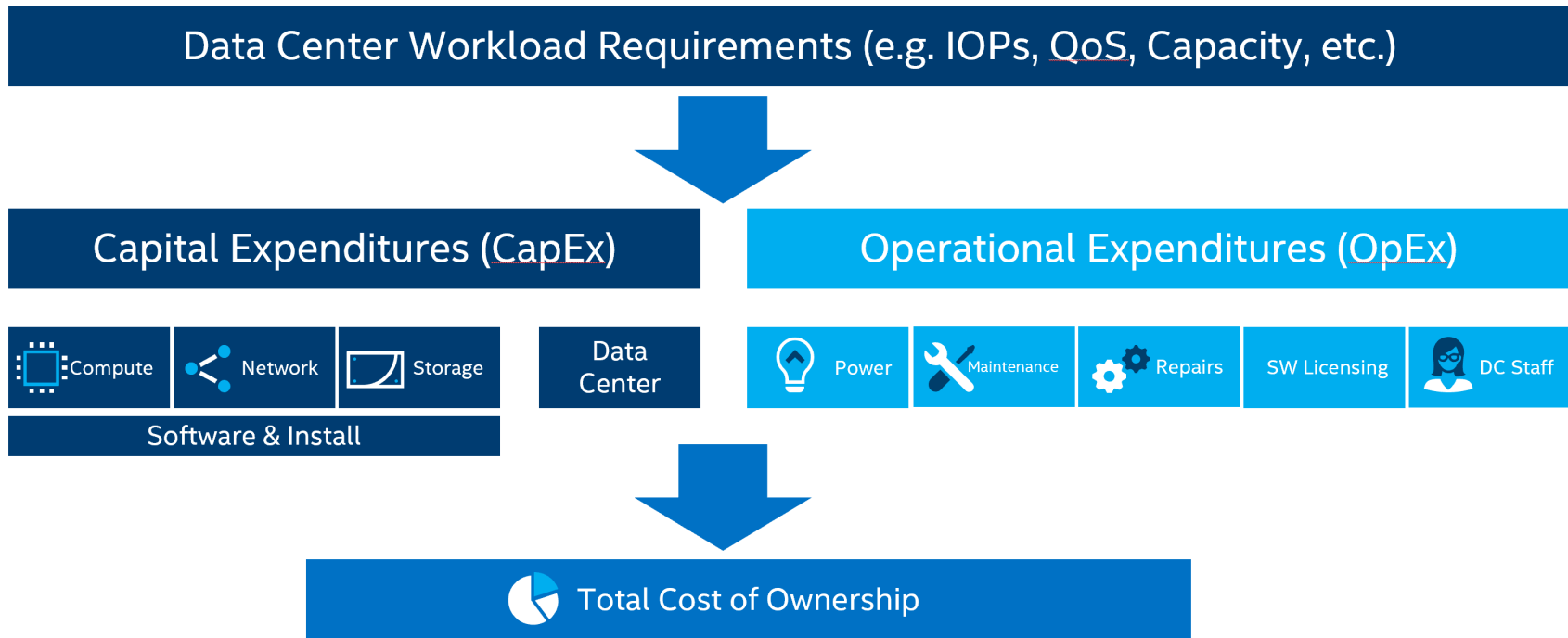
Figure 11 - Share Worldwide Byte Shipments into the Enterprise Core and Edge by Storage Media Type



Source: Data Age 2025, sponsored by Seagate with data from IDC Global DataSphere, Nov 2018



Where does data center spend go?





Total Cost of Ownership for Intel QLC SSDs

Lower drive costs

TLC > QLC

Reduced DRAM through
larger block access

**Reduce
Operating Costs**

with lower power,
higher density, lower
cooling costs, and
fewer drive
replacements

**Increase
efficiency**

with data
reduction
techniques



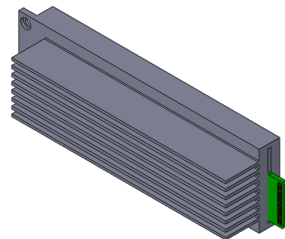
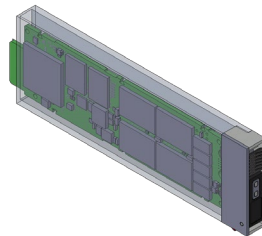
Flash Memory Summit

Range of PCIe Form Factors

M.2



E1.S



5.9mm

9.5mm

25mm

U.2

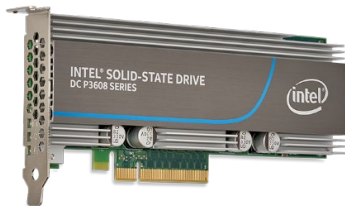


E1.L



9.5mm/18mm

AIC



E1.L



E3.L, E3.S

